



Explore Your Funding Options at Inspire Allied Health and Education Group

A Parent's Guide



Copyright © 2024 Inspire Allied Health and Education Group PTY LTD.

All rights reserved.

The content of this information, including but not limited to all text, graphics, images, and other materials, is owned by Inspire Allied Health and Education Group PTY LTD and is protected by Australian copyright laws and international treaty provisions. This information is licensed for use, not sold. Unauthorised reproduction or distribution of this program, or any portion of it, may result in severe civil and criminal penalties, and will be prosecuted to the maximum extent possible under the law.

For permissions requests, please contact

Rebecca Garnsey @ rebecca.garnsey@inspireaheg.com.au

Inspire Allied Health and Education Group PTY LTD

PO Box 275,

Camden NSW 2570

Australia

Disclaimer:

The information provided by Inspire Allied Health and Education Group PTY LTD has been designed by allied health professionals and is intended for general purposes only and is not tailored to the specific circumstances of any individual. It is not a substitute for professional medical advice, diagnosis, or individual treatment.

Furthermore, Inspire Allied Health and Education Group PTY LTD cannot be held responsible for any misuse, misinterpretation or adverse effects that may arise from the use of this information. While every effort has been made to ensure the accuracy and reliability of the information provided, Inspire Allied Health and Education Group assumes no responsibility for errors or omissions.

By using this information, you agree to release and hold harmless Inspire Allied Health and Education Group PTY LTD and its employees, agents, and representatives from any and all claims, demands, and damages (actual and consequential) of every kind and nature, known and unknown, suspected and unsuspected, disclosed and undisclosed, arising out of or in any way connected with your use of this program.

If you have any questions, please contact Inspire Allied Health and Education Group's CEO at rebecca.garnsey@inspireaheg.com.au

Inspire Allied Health and Education Group PTY LTD

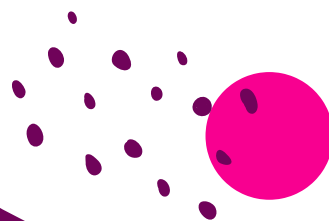
PO Box 275,

Camden NSW 2570

Australia



To support you in your allied health journey, we
want to inform you about the various funding
options available to make your child's experience
with us more accessible.



- **Paying Privately:** Opt for the convenience of private payments at the time of your session and enjoy a seamless experience at Inspire AHEG.

- **Medicare Rebates:** Speak to your Medicare practitioner about your child's eligibility for Medicare rebates to alleviate the financial burden. Our team can guide you on how to access these rebates for your child's well-being.

- **NDIS Funding:** Inspire AHEG is NDIS-registered. Inspire AHEG can help you to explore the possibilities of funding support through the National Disability Insurance Scheme (NDIS). We also accept NDIA, Plan and Self-Managed Funding Plans.



- **Private Health Funds:** Some private health funds offer coverage for allied health care services. Check with your provider to see if you can benefit from this option.

We encourage all our valued clients to reach out to our dedicated team to discuss and understand your payment options available. Every child is unique, and so are the financial solutions we can tailor for you.

Disorders Medicare Rebate

(formerly known as Helping Children with Autism and Better
Start Program Plans)

These plans are referred to by a paediatrician and can be for assessment and/or therapy.

Disabilities include:

- ASD
- Sight Impairment
- Hearing impairment
- Deafblindness
- Cerebral palsy
- Down Syndrome
- Fragile X Syndrome
- Prada Willi Syndrome
- Angleman Syndrome
- Kabuki Syndrome
- Smith-Magenis Syndrome
- CHARGE Syndrome
- Cri Du Chat Syndrome
- Cornelia de Lange syndrome
- Microcephaly if a child has: i) a head circumference less than the third percentile for age and sex; and ii) a functional level at or below 2 standard deviations below the mean age on a standard developmental test, or an IQ score of less than 70 on a standardised test of intelligence.
- Rett's disorder
- Williams Syndrome

1. Diagnosis and treatment plan must have been made before the child's 13th birthday

2. Referral must be used before the child's 15th birthday

3. Children can be suspected of having one of the above mentioned disabilities to access the rebate for assessment

4. Children must have a diagnosis of one of the above mentioned to access the therapy rebate

5. The purpose of the assessment is to help paediatricians with the diagnosis of one of the above conditions

Entitlements

4 Assessment rebates – (can be used for multiple services, 4 in total)

20 therapy rebates – (can be used for multiple services, 20 in total)

This plan is a once only plan

| Profession | Service | Rebate |
|----------------------|---------|---------|
| Psychology | Therapy | \$98.95 |
| Occupational Therapy | Therapy | \$87.25 |
| Speech Pathology | Therapy | \$87.25 |



Billing Process

1. At Inspire Allied Health and Education Group, for Speech Therapy, Occupational Therapy and Psychology consultations and therapy, as well as all discipline assessments, the session is bulk billed first using your Medicare card.

2. Once the bulk bill is complete, the additional service fee must be paid in full via your choice of payment method.

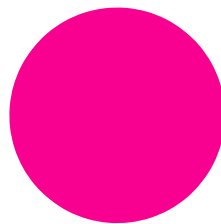
*Please note: there is a gap payment which you will need to pay as the Medicare rebate does not cover the entire service fee.

In addition, Helping Children with Autism and Better Start Program rebates can only be used with registered clinicians for Speech Pathology, Occupational Therapy, and Psychology. They cannot be used for Music Therapy, Art Therapy, Education, Music Education or with Therapy Assistants.



Chronic Disease Allied Health Services or Enhanced Primary Care Plan

Chronic Disease Management Plans are for people with chronic or terminal illness, or those with complex needs that require a multidisciplinary intervention approach.



1. Chronic/terminal or complex needs

2. Requires a multidisciplinary intervention approach – must consist of GP and at least 2 other health professionals

3. The condition has to be most likely to be present for at least 6 months

4. Aboriginal and Torres Strait Islanders, who have had a health check

5. Aged patients

Entitlements

5 Medicare rebates in a calendar year (January 1st
– December 31st)

| Profession | Rebate |
|----------------------|---------|
| Psychology | \$61.80 |
| Speech Pathology | \$61.80 |
| Occupational Therapy | \$61.80 |

Referral Process

1. EPC must come from a GP or paediatrician
2. GP's must use a referral form that has been issued by the Australian government department of health or a form that contains all of the components of this form. The form issued by the Department is available at <http://www.health.gov.au/mbsprimarycareitems>
3. Clients must bring the referral to the clinic



Billing Process

-
1. Inspire Allied Health and Education Groups service fee must be paid first by your preferred method (e.g., credit card, eft etc.).
 2. Present your Medicare card following payment for the receptionist to process your rebate.
 3. Your rebate must go back into a savings or cheque account.

Please note: there is a gap payment which you will need to pay as the Medicare rebate does not cover the entire service fee.

Mental Health Care Plans

Mental Health Plans are given to patients for some of the following reasons and can only be used for Registered Psychologists:

- **Psycho education**
- **Cognitive behaviour therapy**
 - Behaviour intervention
 - Behaviour modification
 - Exposure techniques
 - Activity scheduling
- **Cognitive therapy**
- **Relaxation strategies**
 - Progressive muscle relaxation
 - Controlled breathing
- **Psychological strategies**

- **Skills training**

- Problem solving and training
- Anger management
- Social skills training
- Communication training
- Stress management
- Parent management training

- **Interpersonal therapy (depression)**
- **Narrative therapy for Aboriginal and Torres Strait Islanders**

Entitlements

10 Individual therapy sessions per calendar year (1st January – 31st December)

10 group therapy sessions per calendar year (1st January – 31st December) – must have 6 to 10 patients and are eligible for these separate to individual services.

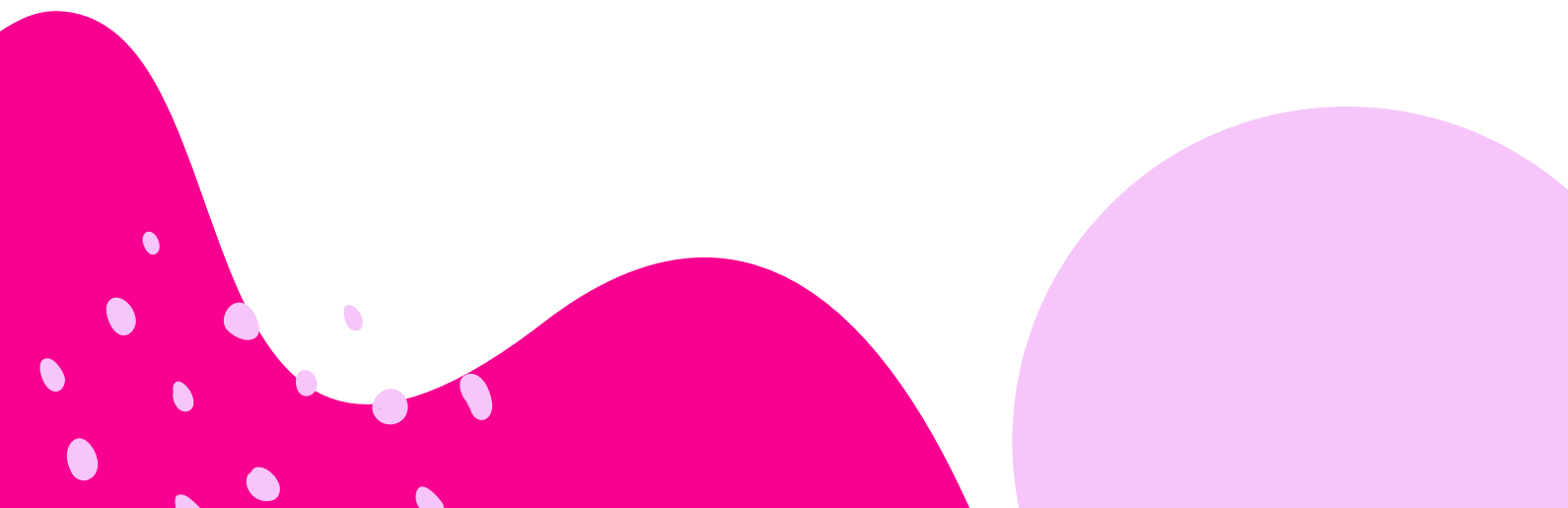
| Profession | Service | In/out of clinic | Rebate |
|----------------------------|------------|------------------|----------|
| Psychology - 50 mins** | Individual | In | \$98.95 |
| Psychology - Out of Clinic | Individual | Out | \$124.30 |

****50 minute sessions – These are services lasting more than 50 minutes.**

Referral Process

1. Referral from GP or paediatrician

2. Referring practitioners are not required to use a specific form to refer patients for these services. The referral may be a letter or a note to an eligible allied mental health professional signed and dated by the referring practitioner.





Billing Process

1. Inspire Allied Health and Education Groups service fee must be paid first by your preferred method (e.g., cash, credit, eft, etc).
2. Present your medicare card following payment for the receptionist to process your rebate.
3. Your rebate must go back into a savings or cheque account.

*Please note: there is a gap payment which you will need to pay as the Medicare rebate does not cover the entire service fee.



Billing Process

In addition, Chronic Disease Allied Health services or Enhanced Primary Care Plan rebates can only be used with registered clinicians in Speech Therapy, Occupational Therapy, and Psychology. Rebates cannot be used for Music Therapy, Art Therapy, Music Education, Education or with Therapy Assistants.



Contact

Phone Number: 1300 629 344

Email: hr@inspireaheg.com.au

Website: www.inspireaheg.com.au

 www.inspireaheg.com.au

 [@inspireahegrp](https://www.instagram.com/inspireahegrp)

 [inspireahegrp](https://www.facebook.com/inspireahegrp)

Interested in our services? Click the link below to register:

[https://macarthurchildrensdevelopmentalclinic.snapforms.com
.au/form/participant-intake-form](https://macarthurchildrensdevelopmentalclinic.snapforms.com.au/form/participant-intake-form)

